

## BAT3 RABBIT MAB

货号: N261913

产品全名: BAT3 兔单克隆抗体

基因符号 BAG6; BAT 3; Scythe

**UNIPROT ID:** P46379

**背景:** Chaperone that plays a key role in various processes such as apoptosis, insertion of tail-anchored (TA) membrane proteins to the endoplasmic reticulum membrane and regulation of chromatin. Acts in part by regulating stability of proteins and their degradation by the proteasome. Participates in endoplasmic reticulum stress-induced apoptosis via its interaction with AIFM1/AIF by regulating AIFM1/AIF stability and preventing its degradation.

**抗原:** A synthetic peptide of human BAT3

**经过测试的应用:** WB, ICC/IF

**推荐稀释比:** WB: 1/500-1/1000 IF: 1/50-1/200

**种属反应性:** Rabbit

**克隆性:** Rabbit Monoclonal

**克隆编号:** R04-1C1

**分子量:** Calculated MW: 119 kDa; Observed MW: 150 kDa

**亚型:** IgG

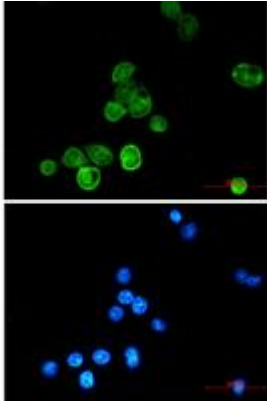
**纯化:** Affinity Purified

**种属反应性:** Human, Mouse and Rat

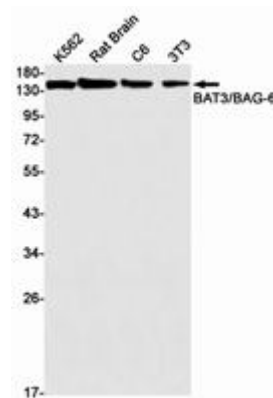
**成分:** PBS (without Mg<sup>2+</sup> and Ca<sup>2+</sup>), pH 7.3 containing 50% glycerol, 0.5% BSA and 0.02% sodium azide

**研究领域:** Cell Biology

**储存和运输:** Store at -20°C. Avoid repeated freezing and thawing



Immunocytochemistry analysis of BAT3/BAG6 (green) in MCF-7 using BAT3/BAG6 antibody, and DAPI (blue)



Western blot analysis of BAT3/BAG6 in K562, rat Brain, C6, 3T3 lysates using BAT3 antibody.