

BACE1 RABBIT MAB

货号: N261904

产品全名: BACE1 兔单克隆抗体

基因符号 ASP2; Bace; C76936

UNIPROT ID: P56818

背景: Responsible for the proteolytic processing of the amyloid precursor protein (APP). Cleaves at the N-terminus of the A-beta peptide sequence, between residues 671 and 672 of APP, leads to the generation and extracellular release of beta-cleaved soluble APP, and a corresponding cell-associated C-terminal fragment which is later released by gamma-secretase. Cleaves APP with much more catalytic efficiency than for the wild-type.

抗原: Recombinant protein of mouse BACE1

经过测试的应用: WB,IP

推荐稀释比: WB: 1/500-1/1000 IP: 1/20

种属反应性: Rabbit

克隆性: Rabbit Monoclonal

克隆编号: R03-9C8

分子量: Calculated MW: 56 kDa; Observed MW: 70 kDa

亚型: IgG

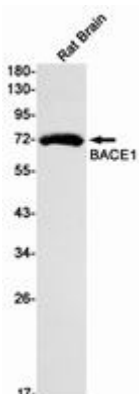
纯化: Affinity Purified

种属反应性: Rat

成分: PBS (without Mg²⁺ and Ca²⁺), pH 7.3 containing 50% glycerol, 0.5% BSA and 0.02% sodium azide

研究领域: Neuroscience&Alzheimer's disease

储存和运输: Store at -20°C. Avoid repeated freezing and thawing



Western blot analysis of BACE1 in rat Brain lysates using BACE1 antibody.



Product Description

Pioneering GTPase and Oncogene Product Development since 2010
