

## ATM RABBIT MAB

货号: N261751

产品全名: ATM 兔单克隆抗体

基因符号 ATM; Serine-protein kinase ATM; Ataxia telangiectasia mutated; A-T mutated

**UNIPROT ID:** Q13315

**背景:** The protein encoded by this gene belongs to the PI3/PI4-kinase family. This protein is an important cell cycle checkpoint kinase that phosphorylates; thus, it functions as a regulator of a wide variety of downstream proteins, including tumor suppressor proteins p53 and BRCA1, checkpoint kinase CHK2, checkpoint proteins RAD17 and RAD9, and DNA repair protein NBS1. This protein and the closely related kinase ATR are thought to be master controllers of cell cycle checkpoint signaling pathways that are required for cell response to DNA damage and for genome stability.

**抗原:** Recombinant protein of human ATM

**经过测试的应用:** WB,IP,ChIP

**推荐稀释比:** WB: 1/500-1/1000 IP: 1/20 ChIP: 1/20

**种属反应性:** Rabbit

**克隆性:** Rabbit Monoclonal

**克隆编号:** R05-8D4

**分子量:** Calculated MW: 351 kDa; Observed MW: 351 kDa

**亚型:** IgG

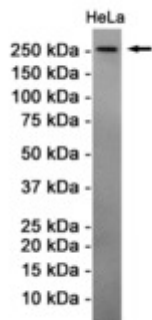
**纯化:** Affinity Purified

**种属反应性:** Human

**成分:** PBS (without Mg<sup>2+</sup> and Ca<sup>2+</sup>), pH 7.3 containing 50% glycerol, 0.5% BSA and 0.02% sodium azide

**研究领域:** Epigenetics and Nuclear Signaling

**储存和运输:** Store at -20°C. Avoid repeated freezing and thawing



Western blot analysis of ATM in HeLa lysates using ATM antibody.