

ATG7 RABBIT PAB

货号: N225874

产品全名: ATG7 兔多抗

基因符号 hAGP7; Ubiquitin-activating enzyme E1-like protein; APG7L

UNIPROT ID: O95352

背景: The molecular machinery of autophagy was largely discovered in yeast and referred to as autophagy-related (Atg) genes. Formation of the autophagosome involves a ubiquitin-like conjugation system in which Atg12 is covalently bound to Atg5 and targeted to autophagosome vesicles. This conjugation reaction is mediated by the ubiquitin E1-like enzyme Atg7 and the E2-like enzyme Atg10.

抗原: A synthesized peptide derived from human Atg7(Apg7)

经过测试的应用: WB, ICC/IF

推荐稀释比: WB: 1/500-1/1000 IF: 1/50-1/200

种属反应性: Rabbit

克隆性: Rabbit Polyclonal

分子量: Calculated MW: 78 kDa; Observed MW: 78 kDa

亚型: IgG

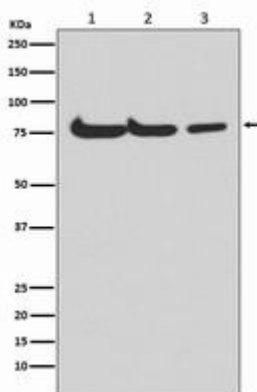
纯化: Affinity Chromatography

种属反应性: Human, Mouse and Rat

成分: PBS (without Mg²⁺ and Ca²⁺), pH 7.3 containing 50% glycerol, 0.5% BSA and 0.02% sodium azide

研究领域: Autophagy & Autophagosome

储存和运输: Store at -20°C. Avoid repeated freezing and thawing



Western blot analysis of Atg7(Apg7) in (1) HepG2 lysates; (2) mouse spleen lysates; (3) rat kidney lysates using ATG7 antibody.



Product Description

Pioneering GTPase and Oncogene Product Development since 2010
