

ATG7 (1F8) MOUSE MAB

货号: N261360

产品全名: ATG7 (1F8) 小鼠单抗

基因符号 hAGP7; Ubiquitin-activating enzyme E1-like protein; APG7L

UNIPROT ID: O95352

背景: The molecular machinery of autophagy was largely discovered in yeast and referred to as autophagy-related (Atg) genes. Formation of the autophagosome involves a ubiquitin-like conjugation system in which Atg12 is covalently bound to Atg5 and targeted to autophagosome vesicles. This conjugation reaction is mediated by the ubiquitin E1-like enzyme Atg7 and the E2-like enzyme Atg10.

抗原: Purified recombinant protein expressed in E.coli.

经过测试的应用: IHC-P

推荐稀释比: IHC: 1/50-1/100

种属反应性: Mouse

克隆性: Mouse Monoclonal

克隆编号: 1F8-8H4-4G10

分子量: -

亚型: IgG1

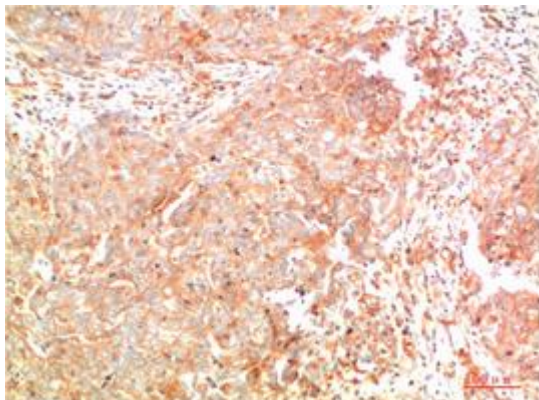
纯化: Affinity Purified

种属反应性: Human,Rat,Mouse

成分: PBS (without Mg²⁺ and Ca²⁺), pH 7.3 containing 50% glycerol, 0.5% BSA and 0.02% sodium azide

研究领域: Cell Biology

储存和运输: Store at -20°C. Avoid repeated freezing and thawing



Immunohistochemistry analysis of paraffin-embedded Human Breast Carcinoma Tissue using ATG7 (1F8) antibody. High-pressure and temperature Sodium Citrate pH 6.0 was used for antigen retrieval.



Product Description

Pioneering GTPase and Oncogene Product Development since 2010
