

ATG3 RABBIT PAB

货号: N225814

产品全名: ATG3 兔多抗

基因符号 APG3; APG3L; PC3-96; APG3-LIKE

UNIPROT ID: Q9NT62

背景: E2-like enzyme involved in autophagy and mitochondrial homeostasis. Catalyzes the conjugation of ATG8-like proteins (GABARAP, GABARAPL1, GABARAPL2 or MAP1LC3A) to phosphatidylethanolamine (PE). Catalyzing the conjugation of ATG12 to itself, ATG12 conjugation to ATG3 playing a role in mitochondrial homeostasis but not in autophagy. ATG7 (E1-like enzyme) facilitates this reaction by forming an E1-E2 complex with ATG3.

抗原: A synthesized peptide derived from human Apg3 (Atg3)

经过测试的应用: WB,IHC-P,ICC/IF

推荐稀释比: WB: 1/500-1/1000 IHC: 1/50-1/100 IF: 1/50-1/200

种属反应性: Rabbit

克隆性: Rabbit Polyclonal

分子量: Calculated MW: 36 kDa; Observed MW: 40 kDa

亚型: IgG

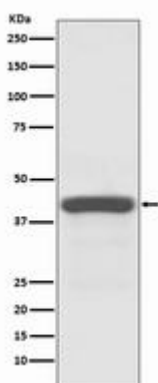
纯化: Affinity Chromatography

种属反应性: Human, Mouse and Rat

成分: PBS (without Mg²⁺ and Ca²⁺), pH 7.3 containing 50% glycerol, 0.5% BSA and 0.02% sodium azide

研究领域: Cell Biology

储存和运输: Store at -20°C. Avoid repeated freezing and thawing



Western blot analysis of Apg3 (Atg3) in Jurkat lysates using ATG3 antibody.



Product Description

Pioneering GTPase and Oncogene Product Development since 2010
