

## ATG3 RABBIT MAB

货号: N261886

产品全名: ATG3 兔单克隆抗体

基因符号 APG3; APG3L; PC3-96; APG3-LIKE

**UNIPROT ID:** Q9NT62

背景: E2-like enzyme involved in autophagy and mitochondrial homeostasis. Catalyzes the conjugation of ATG8-like proteins (GABARAP, GABARAPL1, GABARAPL2 or MAP1LC3A) to phosphatidylethanolamine (PE). Catalyzing the conjugation of ATG12 to itself, ATG12 conjugation to ATG3 playing a role in mitochondrial homeostasis but not in autophagy. ATG7 (E1-like enzyme) facilitates this reaction by forming an E1-E2 complex with ATG3.

抗原: A synthetic peptide of human ATG3

经过测试的应用: WB,IHC-F,IHC-P,ICC/IF

推荐稀释比: WB: 1/500-1/1000 IHC: 1/50-1/100 IF: 1/50-1/200

种属反应性: Rabbit

克隆性: Rabbit Monoclonal

克隆编号: R06-9E7

分子量: Calculated MW: 36 kDa; Observed MW: 40 kDa

亚型: IgG

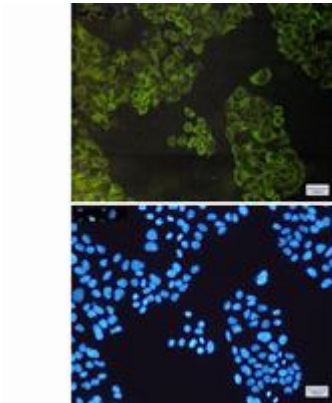
纯化: Affinity Purified

种属反应性: Human, Mouse and Rat

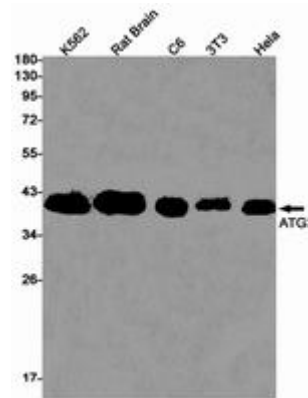
成分: PBS (without Mg<sup>2+</sup> and Ca<sup>2+</sup>), pH 7.3 containing 50% glycerol, 0.5% BSA and 0.02% sodium azide

研究领域: Autophagy&Autophagosome

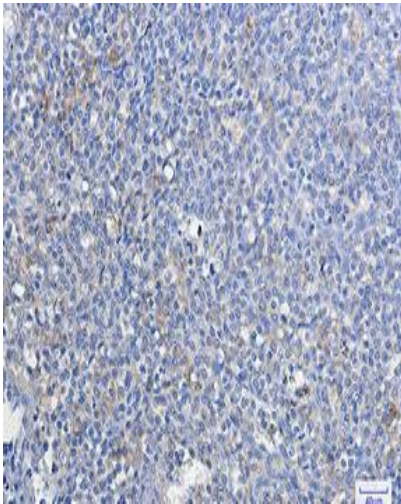
储存和运输: Store at -20°C. Avoid repeated freezing and thawing



Immunocytochemistry analysis of ATG3 (green) in Hela using ATG3 antibody, and DAPI (blue)



Western blot analysis of ATG3 in K562, rat Brain, C6, 3T3, Hela lysates using ATG3 antibody.



Immunohistochemistry analysis of paraffin-embedded Human tonsil using ATG3 antibody. High-pressure and temperature Sodium Citrate pH 6.0 was used for antigen retrieval.