

ATG10 RABBIT PAB

货号: N225815

产品全名: ATG10 兔多抗

基因符号 autophagy related 10; APG10; APG10L; pp12616

UNIPROT ID: Q9H0Y0

背景: E2-like enzyme involved in autophagy. Acts as an E2-like enzyme that catalyzes the conjugation of ATG12 to ATG5. ATG12 conjugation to ATG5 is required for autophagy. Likely serves as an ATG5-recognition molecule. Not involved in ATG12 conjugation to ATG3 (By similarity). Plays a role in adenovirus-mediated cell lysis.

抗原: A synthesized peptide derived from human Apg10 (Atg10)

经过测试的应用: WB,IP

推荐稀释比: WB: 1/500-1/1000 IP: 1/20

种属反应性: Rabbit

克隆性: Rabbit Polyclonal

分子量: Calculated MW: 25 kDa; Observed MW: 25 kDa

亚型: IgG

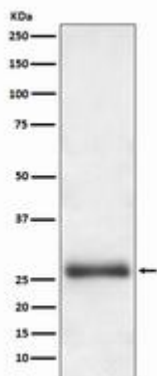
纯化: Affinity Chromatography

种属反应性: Human

成分: PBS (without Mg²⁺ and Ca²⁺), pH 7.3 containing 50% glycerol, 0.5% BSA and 0.02% sodium azide

研究领域: Cell Biology

储存和运输: Store at -20°C. Avoid repeated freezing and thawing



Western blot analysis of Apg10 (Atg10) in HeLa lysates using ATG10 antibody.