

## ATF5 RABBIT MAB

货号: N261884

产品全名: ATF5 兔单克隆抗体

基因符号 ATF5; ATFX; Cyclic AMP-dependent transcription factor ATF-5; cAMP-dependent transcription factor ATF-5; Activating transcription factor 5; Transcription factor ATFX

**UNIPROT ID:** Q9Y2D1

背景: ATF5 or Activating transcription factor 5, binds to cAMP inducible promoters and is involved in gene transcription. This protein binds the cAMP response element (CRE) (consensus: 5'-GTGACGT[AC][AG]-3'), a sequence present in many viral and cellular promoters. ATF5 plays a role in inhibition of nerve growth factor induced neuronal outgrowth and regulation of neurogenesis.

抗原: A synthetic peptide of human ATF5

经过测试的应用: WB,IHC-P,IP

推荐稀释比: WB: 1/500-1/1000 IHC: 1/50-1/100 IP: 1/20

种属反应性: Rabbit

克隆性: Rabbit Monoclonal

克隆编号: R06-6G9

分子量: Calculated MW: 31 kDa; Observed MW: 31 kDa

亚型: IgG

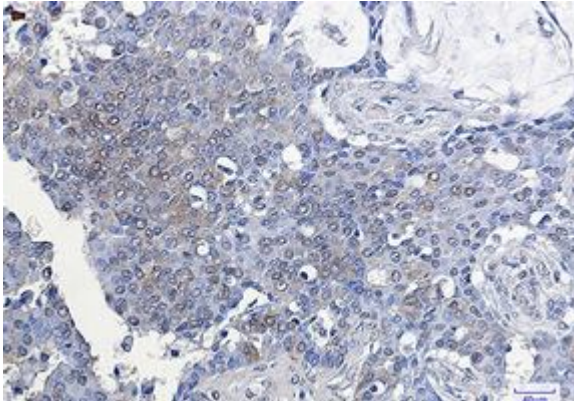
纯化: Affinity Purified

种属反应性: Human, Mouse and Rat

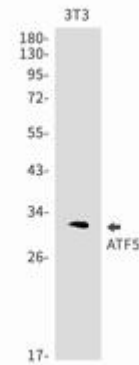
成分: PBS (without Mg<sup>2+</sup> and Ca<sup>2+</sup>), pH 7.3 containing 50% glycerol, 0.5% BSA and 0.02% sodium azide

研究领域: Epigenetics and Nuclear Signaling

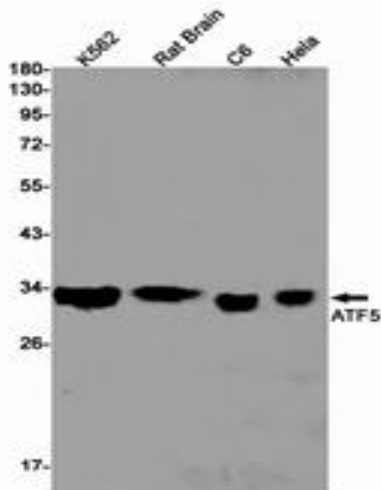
储存和运输: Store at -20°C. Avoid repeated freezing and thawing



Immunohistochemistry analysis of paraffin-embedded Human breast cancer using ATF5 antibody. High-pressure and temperature Sodium Citrate pH 6.0 was used for antigen retrieval.



Western blot analysis of ATF5 in 3T3 lysates using ATF5 antibody.



Western blot analysis of ATF5 in K562, rat Brain, C6, HeLa lysates using ATF5 antibody.