

## AQUAPORIN 2 RABBIT MAB

货号: N261864

产品全名: Aquaporin 2 兔单克隆抗体

基因符号 AQP-CD; WCH-CD

**UNIPROT ID:** P41181

**背景:** The basic job of aquaporin 2 is to reabsorb water from the urine while its being removed from the blood by the kidney. Aquaporin 2 is in kidney epithelial cells and usually lies dormant in intracellular vesicle membranes, but when it is needed vasopressin binds to the cell surface vasopressin receptor, activating a signaling pathway that causes the aquaporin 2 containing vesicles to fuse with the plasma membrane so the aquaporin 2 can be used by the cell.

**抗原:** A synthetic peptide of human Aquaporin 2

**经过测试的应用:** WB,IHC-P,IP

**推荐稀释比:** WB: 1/500-1/1000 IHC: 1/50-1/100 IP: 1/20

**种属反应性:** Rabbit

**克隆性:** Rabbit Monoclonal

**克隆编号:** R05-4A2

**分子量:** Calculated MW: 29 kDa; Observed MW: 37 kDa

**亚型:** IgG

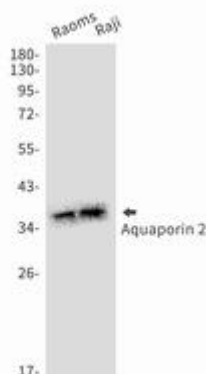
**纯化:** Affinity Purified

**种属反应性:** Human

**成分:** PBS (without Mg<sup>2+</sup> and Ca<sup>2+</sup>), pH 7.3 containing 50% glycerol, 0.5% BSA and 0.02% sodium azide

**研究领域:** Cell Biology

**储存和运输:** Store at -20°C. Avoid repeated freezing and thawing



Western blot analysis of Aquaporin 2 in Raoms, Raji lysates using Aquaporin 2 antibody.



# Product Description

Pioneering GTPase and Oncogene Product Development since 2010

---