

## ALBUMIN PAB

产品名称: Albumin 兔多抗

货号: 21112

基因符号: Albumin

描述: Albumin 兔多抗

背景: Serum albumin is the most abundant blood plasma protein in mammals. Albumin is essential for maintaining the osmotic pressure needed for proper distribution of body fluids between intravascular compartments and body tissues. It also acts as a plasma carrier by non-specifically binding several hydrophobic steroid hormones and as a transport protein for hemin and fatty acids. Too much serum albumin in the body can be harmful.

免疫原: A synthetic peptide from the N-terminal region of human Albumin 蛋白

经过测试的应用: ELISA, WB, IHC, IP

推荐稀释比:

ELISA: 1:100-1:5000

WB: 1:100-1:1000

IHC: 1:100-1:1000

**Concentration:** 0.2 mg/ml

种属反应性: Rabbit

形式: Liquid

克隆性: Polyclonal

亚型: IgG

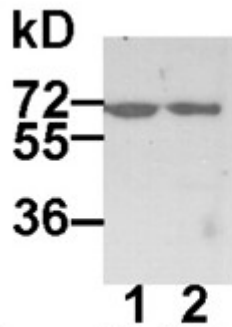
纯化: Purified from serum

成分: PBS (without  $Mg^{2+}$  and  $Ca^{2+}$ ), pH 7.4, 150 mM NaCl, 50% glycerol  
Species

种属反应性: Albumin antibody recognizes Albumin proteins from mammals.

储存条件: Store at  $-20^{\circ}C$ . Avoid repeated freezing and thawing

蛋白质印迹:



**WB: anti-Albumin pAb**

HEK-293T (lane 1) and MEF (lane 2) whole-cell lysates were used for Western blot with anti-Albumin 兔多抗 (cat # 21112).